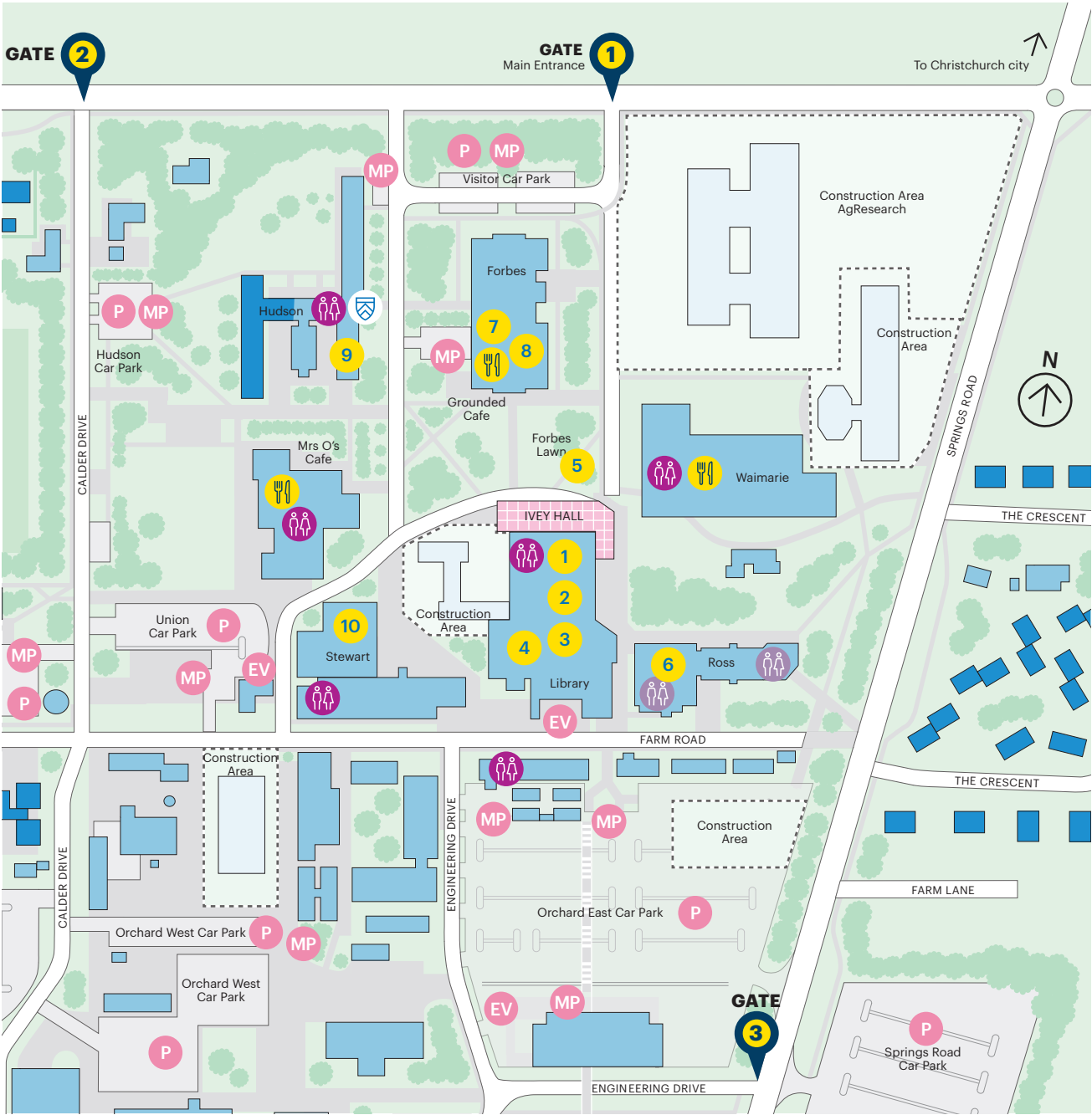


Location of artworks on campus



**LINCOLN
UNIVERSITY**
Art Collection



Correct as at September 2023



10

**key artworks
on campus**

Welcome to Lincoln University's Art Guide

Lincoln University has an enviable collection of over 300 artworks by renowned New Zealand artists. Active collecting began in the 1970s with further works generously donated by staff, students and artists over the years. You will find the art collection spread throughout the university campus. Please wander at your leisure and explore.

The following 10 key works in the collection are intended as a starting point - you will discover many more on your journey!



Reproduced courtesy of
Christchurch Art Gallery Te Puna o Waiwhetū.

1.

William Sutton
Plantation Series
XVIII
1988

Location:
Library foyer



2.

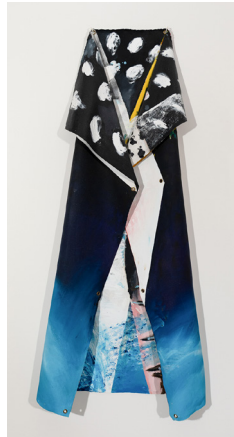
Bill Hammond
Talking All That Jazz
1989

Location:
Library, ground floor

3.

Philippa Blair
Snowbound Cloak,
1993

Location: Library, ground floor



4.

John Bevan Ford
Kaitiaki Figure,
1995

Location: Library, bridge



7.

Doris Lusk
Hill and Stream Near Kurow
1971

Location:
Forbes, first floor



8.

Dick Frizzell
Big Soft Stella
1994

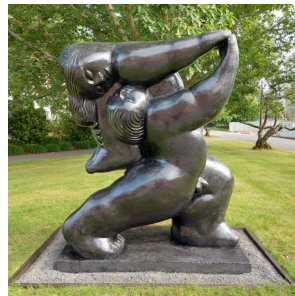
Location:
Forbes, first floor



9.

Robyn Kahukiwa
Still Māori and Comely
1993

Location:
Hudson, southern stairwell



5.

Llew Summers
Joy of Living
1992

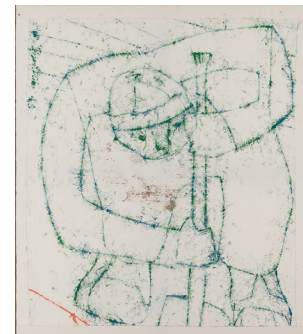
Location:
Forbes lawn



6.

Joanna Braithwaite
NZ Still Life No.3
1990

Location:
Ross foyer



10.

Philip Trusttum
Blue Fencer
c.1991

Location:
Stewart foyer